



## REGIONAL SPECIALISED METEOROLOGICAL CENTRE -TROPICAL CYCLONES, NEW DELHI TROPICAL WEATHER OUTLOOK

DEMS-RSMC TROPICAL CYCLONES NEW DELHI DATED 19.07.2025

**TROPICAL WEATHER OUTLOOK FOR THE NORTH INDIAN OCEAN (THE BAY OF BENGAL OF BENGAL AND THE ARABIAN SEA) VALID FOR THE NEXT 168 HOURS ISSUED AT 0600 UTC OF 19.07.2025 BASED ON 0300 UTC OF 19.07.2025.**

### LAND:

#### Depression over northeast & adjoining areas of northwest Rajasthan

Yesterday's depression over northwest Madhya Pradesh & adjoining Southwest Uttar Pradesh moved west-northwestwards and lay over northwest & adjoining areas of northeast Rajasthan at 0300 UTC of today, the 19<sup>th</sup> July, 2025. It is likely to move west-northwestwards across northwest Rajasthan and weaken gradually into a well-marked low-pressure area during next 12 hours.

As per INSAT 3D Imagery, scattered to broken low and medium clouds with embedded intense to very intense convection lay over Rajasthan & north Gujarat (minimum Cloud Top Temperature - 70°C to -90°C).

### BAY OF BENGAL:

A fresh Low Pressure area is likely to form over north Bay of Bengal around 24th July, 2025.

Scattered to broken low and medium clouds with embedded intense to very intense convection lay over central & south Bay of Bengal, Andaman Sea. Scattered low and medium clouds with embedded isolated moderate to intense convection lay over rest of Bay of Bengal.

#### \*PROBABILITY OF CYCLOGENESIS (FORMATION OF DEPRESSION) DURING NEXT 168 HRS:

24 HOURS	24-48 HOURS	48-72 HOURS	72-96 HOURS	96-120 HOURS	120-144 HOURS	144-168 HOURS
NIL	NIL	NIL	NIL	NIL	NIL	NIL

\*NOTE: EVERY 24HR FORECAST IS VALID UPTO 0300 UTC (0830 IST) OF NEXT DAY

### ARABIAN SEA:

Scattered to broken low and medium clouds with embedded intense to very intense convection lay over eastcentral & southeast Arabian Sea off Karnataka-Kerala coasts & Lakshadweep Islands area. Scattered low and medium clouds with embedded isolated moderate to intense convection lay over Arabian Sea, Maldives & Comorin area.

#### \*PROBABILITY OF CYCLOGENESIS (FORMATION OF DEPRESSION) DURING NEXT 168 HRS:

24 HOURS	24-48 HOURS	48-72 HOURS	72-96 HOURS	96-120 HOURS	120-144 HOURS	144-168 HOURS
NIL	NIL	NIL	NIL	NIL	NIL	NIL

\*NOTE: EVERY 24HR FORECAST IS VALID UPTO 0300 UTC (0830 IST) OF NEXT DAY

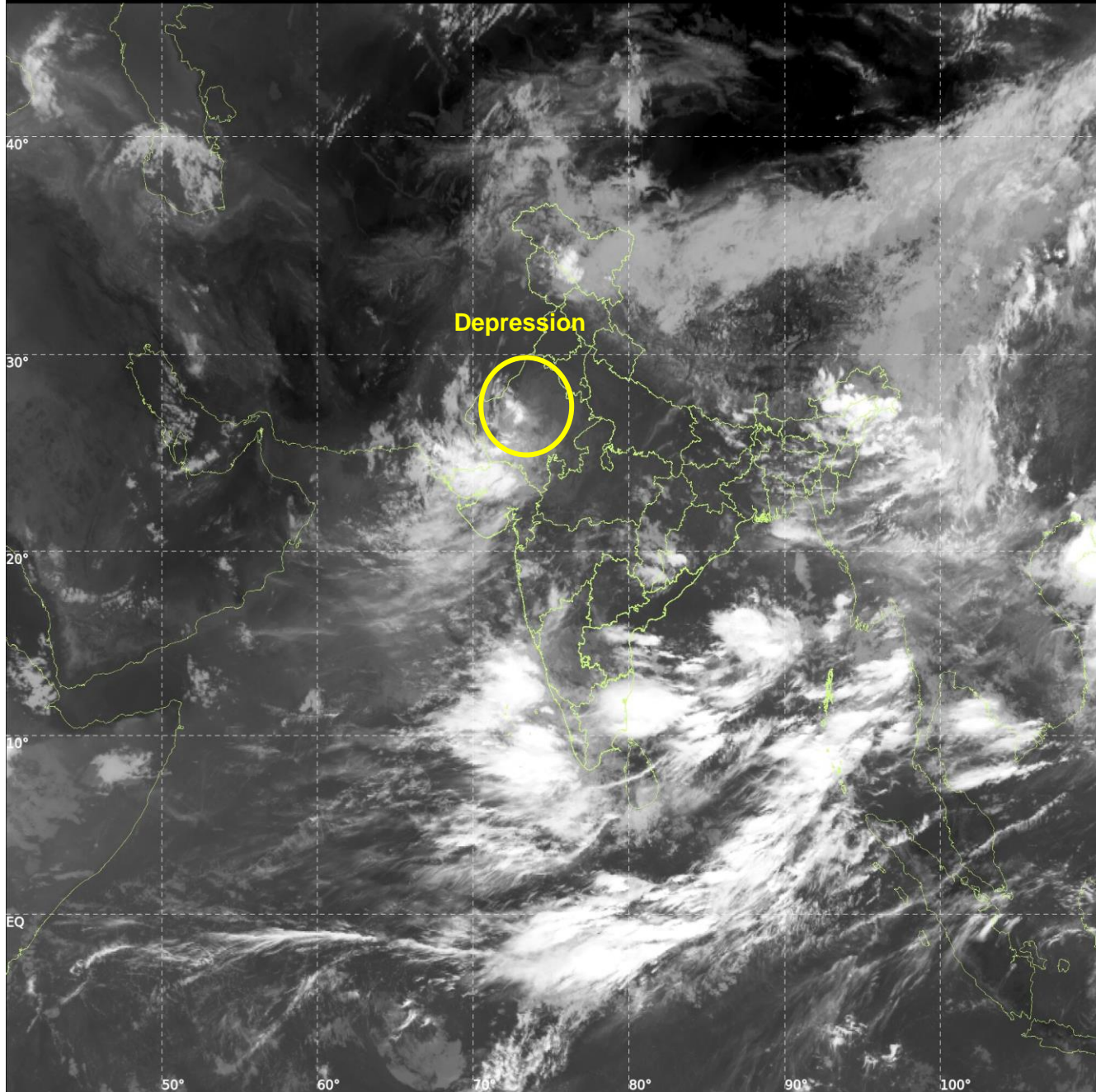
REMARKS: NIL



INSAT-3DS IMG, Thermal Infrared1 Count @ 10.83  $\mu\text{m}$   
GMT:19-07-2025/(0300-0327) IST:19-07-2025/(0830-0857)  
L1C MERCATOR (LINEAR STRETCH: 1%)

382

906



Cloud distribution: (a) Isolated: <25%, Scattered:25-50%, Broken: 51-75%, Solid:>75%, Convection Intensity: (a) Weak: Cloud Top Temperature(CTT)>-25°C,(b)Moderate:CTT:-25°Cto-40°C,(c)Intense:CTT: -41°Cto -70°Cand(d)Very Intense::Less than -70°C  
PROBABILITYOFCYCLOGENESIS(FORMATIONOFDEPRESSION):NIL:0%,LOW:1-33%,MODERATE:34-66%ANDHIGH:67-100%  
ThisisaguidanceBulletinforWMO/ESCAPPanelMembercountries.VisitrespectiveNationalwebsitesforCountryspecificBulletins